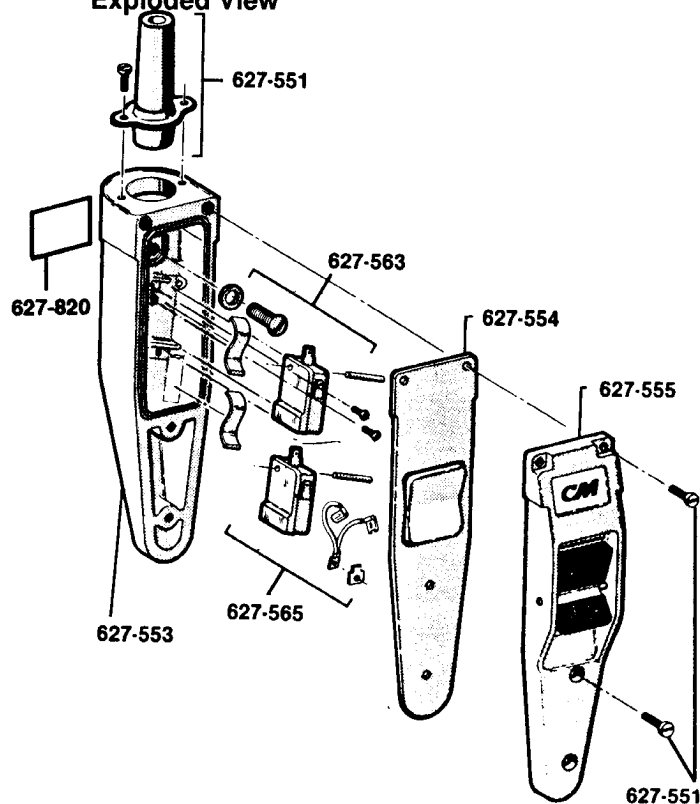


CM Lodestar Control Station Single Speed Parts List

Figure 25. Control Station, Single Speed,
Exploded View



Parts List			
Key No.	Part Name	Number Required	Part No.
627-552	Control Station Consists of 627-553,627-554, 627-555,627-565,627-820, 2-switch mounting pin, 2-pin retainer screw and 2-leaf spring.	1	*28630
627-551	Control Station Kit Consists of: 1-Neoprene Grommet 1-Grommet Retainer Ring 2-Grommet Retainer Ring Attaching Screw 4-Cover Attaching Screw 1-Strain Relief Screw 1-Strain Relief Screw Washer	1	28627
627-553	Case	1	28873
627-554	Gasket	1	28876
627-555	Cover Assembly (Decal & Rocker included)	1	51477

627-563	Control Station Parts Kit Consists of: 1-Strain Relief Attaching Screw 1 -Strain Relief Attaching Screw Washer 2-Switch Mounting Pin 2-Pin Retainer Screw 2-Switch Leaf Spring	1	51481
627-565	Control Station Switch Kit Consists of: 2-Switch 1-Jumper 1-Terminal 1 -Screw	1	51472
627-820	Warning Label	1	24842

*Also order Control Station Kit Key No. 627-551, Part No. 28627.